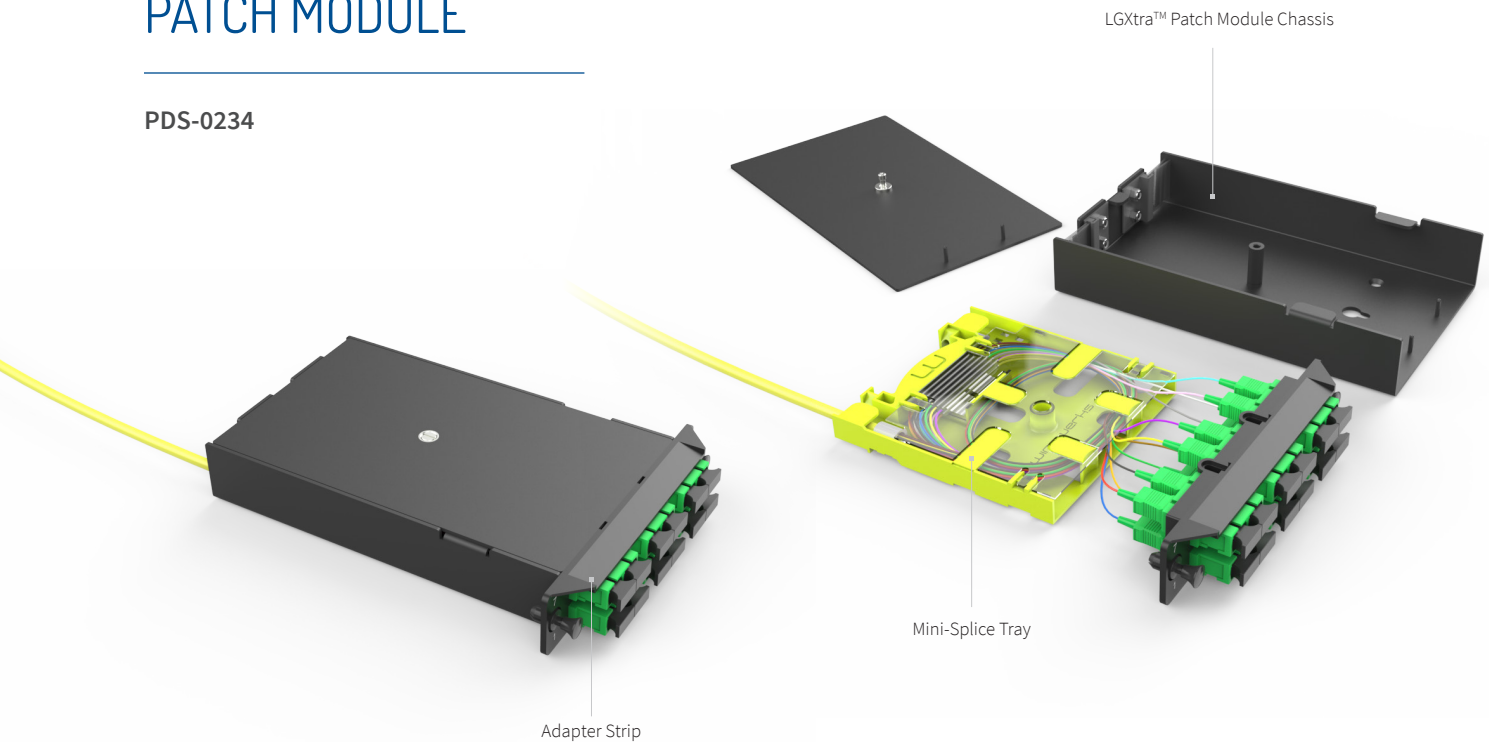


LGXtra™ PATCH MODULE

PDS-0234



DESCRIPTION

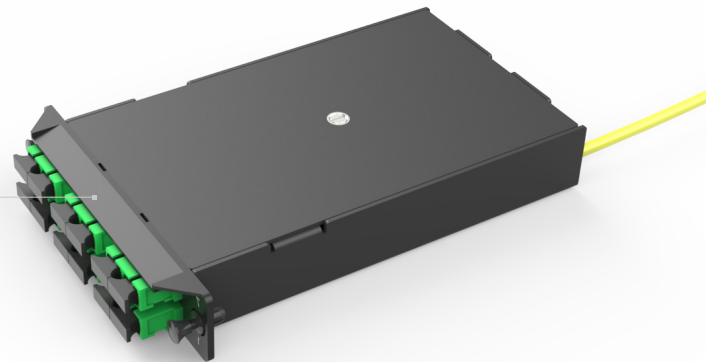
Wirewerks' **LGXtra™** product family is a complete portfolio of LGX-style rack/wall mount patch panels, modules, adapter strips and accessories. All **Wirewerks LGXtra™** products fully comply with standard LGX form factor, footprint and functionality specifications, allowing complete interoperability and interchangeability between all LGXtra™ and LGX-style modules, strips and enclosures. Wirewerks LGXtra™ products bring powerful new features and capabilities to generic LGX-style equivalents, allowing users to selectively update, modernize and expand their existing LGX infrastructure -- all while extending operational lifespan, protecting the original investment, and increasing ROI.

The Wirewerks **LGXtra Patch Module** is a robust, fully LGX-compatible module providing up to 12/24 SC/LC connectors for fiber patching and cross-connect applications. Key LGXtra™ innovations include an integrated, removable fusion splice tray, a removable adapter strip, and Wirewerks' exclusive new 'no-cable tie' strain relief sleeve.

The **LGXtra™ Patch Module** breaks down into three main elements:

Patch Module Chassis

The heavy-duty **Chassis** is formed from 0.65in coated steel with a secure screw-down cover, featuring two cable entry points at the rear with brush-style dust protectors.

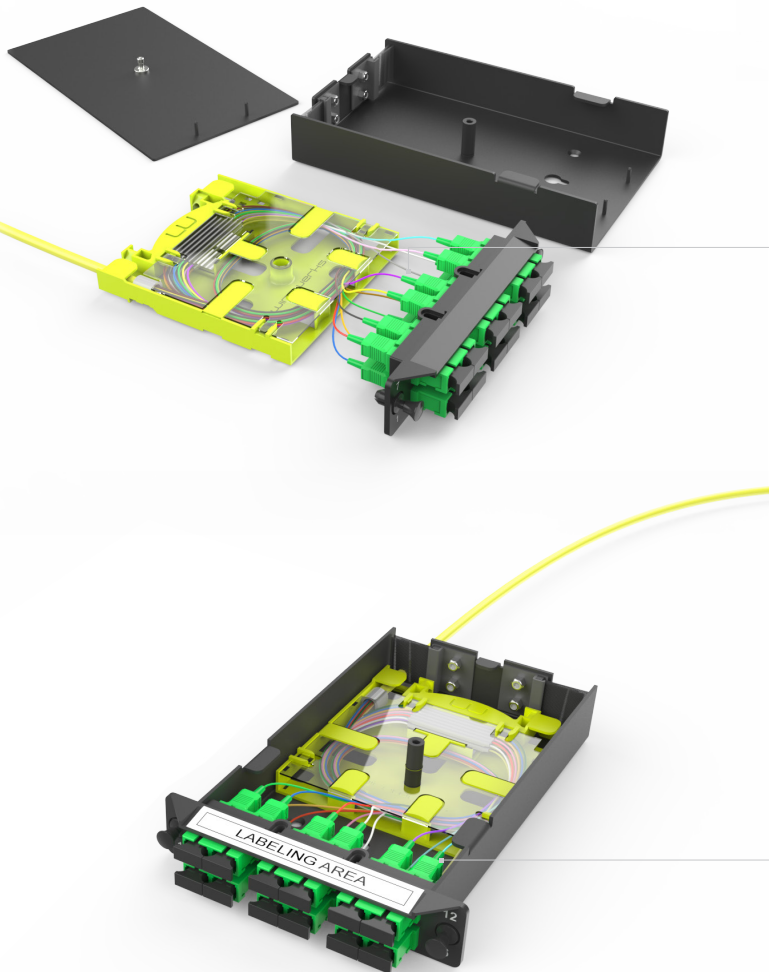


Mini-Splice Tray

The removable **Mini-Splice Tray** (included) serves the triple purpose of receiving and securing the cable within the module; providing fiber management, routing and bend-radius protection; and providing a platform for fusion splicing of fibers when required. The mini-splice tray is fabricated from high-impact, high-contrast yellow ABS thermoplastic that reduces technician eyestrain and installation time while increasing installation quality and yield. The mini-splice tray uses Wirewerks' exclusive new 'no-cable tie' strain relief sleeve (included) to secure cable entry, or supports traditional cable tie attachments if preferred. When splicing is required, the mini-splice tray features Wirewerks' exclusive magnetic splice sleeve holder that secures new splices in place magnetically, eliminating performance robbing micro-bends often associated with typical press-in-place splice sleeve holders.

Adapter Strip

The removable **Adapter Strip** is available with SC/LC duplex/quad adapters (dust caps included). Making the Adapter Strip (and Mini-Splice Tray) removable is an LGXtra™ innovation that makes field installation and configuration easier and faster. Another key LGXtra™ innovation is the easy-to-view labeling space located at the top front edge of each Adapter Strip. These features combine to reduce installation time and cost, while increasing quality and yield at the same time.



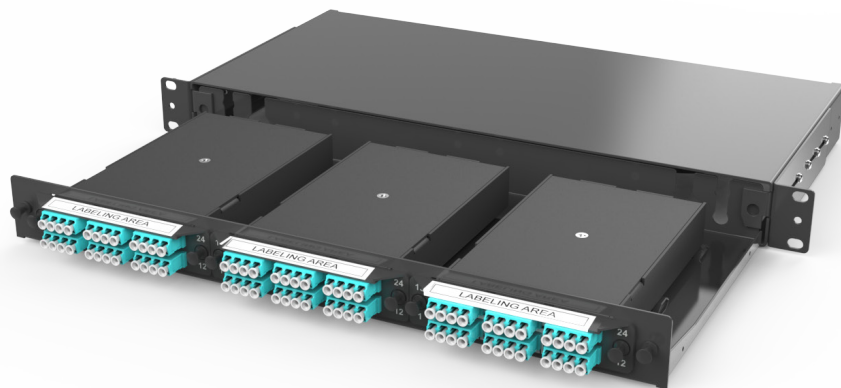
The **LGXtra™ Patch Module** uses push/pull-mounting clips for fast, simple installation or removal in any LGX-compliant panel or enclosure. The Module's chassis is also pre-drilled for direct wall mounting, if preferred.

FEATURES and BENEFITS

- Fully compatible LGX-style module offers many new LGXtra™ features and innovations
- Interoperable/interchangeable/compatible with generic LGX-compliant enclosures and modules
- 12/24 SC/LC duplex/quad fibers per Module
- Low Insertion Loss (IL) to minimize impact on loss budgets
- Removable mini-splice tray provides proper fiber bend radius and routing, and supports fusion splicing complete with magnetic splice sleeve holders
- High-contrast yellow thermoplastic mini-splice tray reduces technician eyestrain and installation time while increasing installation quality and yield
- Exclusive, new 'no-cable tie' strain relief sleeve secures incoming cable without risking performance impairments associated with cable tie attachments (cable ties supported if preferred)
- Removable Adapter Strip makes installation easier and faster; includes easy-to-view labeling space
- Precision engineered and manufactured using high-strength steel and high-impact ABS thermoplastic materials for strength and durability
- Two cable entry points at rear of module with brush-style dust protectors
- Push/Pull-mounting clips for rapid, tool-less installation and removal
- The following cable types can be safely routed in the integrated LGXtra splice tray:
 - Ø 2mm OD x 1
 - Ø 2mm OD x 2
 - Ø 3mm OD x 1
 - Ø 3mm OD x 2
 - 12F Loose-Tube x 1
 - 12F Ribbon x 1
 - 12F Distribution x 1
 - Max OD 7mm

APPLICATIONS

- Data Centers
- SANs
- Enterprise LANs
- MSO/Broadband



LGXtra Patch Module loaded in a Compact LGX 1U Patch Panel
Part Number WW-000069

ORDERING INFORMATION

Part Number	Description
LXPM - BCCD	Loaded LGXtra™ Patch Module

Example: LXPM-L12D = LOADED LGXTRA PATCH MODULE MM OM4, 12 FIBER, LC/PC WITH COLOR-CODED PIGTAILS AND MINI SPLICE KIT

Adapter Type		Fiber Count		Performance	
L	LC	06	6 Fibers	M	62.5/125µm Multimode OM1
C	SC	12	12 Fibers	B	50/125µm Multimode OM2 Bend Insensitive 7.5mm
		24	24 Fibers	G	50/125µm Multimode OM3 Bend Insensitive 7.5mm
				D	50/125µm Multimode OM4 Bend Insensitive 7.5mm
				S	UPC Single Mode OS2 Bend Insensitive 10mm
				A	APC Single Mode OS2 Bend Insensitive 10mm

COMMON CONFIGURATIONS

Part Number	Description
LXPM-C12A	Loaded LGXtra™ Patch Module 12F SM OS2 BI, SC/APC with Color-Coded Pigtailes and Mini Splice Tray
LXPM-C12S	Loaded LGXtra™ Patch Module 12F SM OS2 BI, SC/UPC with Color-Coded Pigtailes and Mini Splice Tray
LXPM-L12A	Loaded LGXtra™ Patch Module 12F SM OS2 BI, LC/APC with Color-Coded Pigtailes and Mini Splice Tray
LXPM-L12S	Loaded LGXtra™ Patch Module 12F SM OS2 BI, LC/UPC with Color-Coded Pigtailes and Mini Splice Tray

INCLUDED

Description
LGXtra™ Adapter Strip and self-adhesive labels
Wirewerks splice ready mini-tray (2 if using 24LC), includes: Color Coded Pigtail, Magnets and Splice Sleeves

PACKAGING and SHIPPING

Description	Dimensions
Cardboard Mailer Box	11.25" x 8.38" x 1.30" (286mm x 213mm x 33mm)

PHYSICAL SPECIFICATIONS

Parameter	Value
Dimensions	Excluding adapters : 7.22" x 4.04" x 1.15" (183mm x 104mm x 38mm)
Weight	1.4lbs (0.64kg)
Materials (plastics, metals, etc.)	LGXtra™ Adapter Strip and splice ready mini-trays: UL 94V-0 high-impact ABS Thermoplastic Casing: Cold rolled steel 0.065" thick
Fiber Adapters	OM1/OM2; Zirconia ceramic sleeve; Beige OM3/OM4; Zirconia ceramic sleeve; Aqua SM; UPC; Zirconia ceramic sleeve; Blue SM; APC; Zirconia ceramic sleeve; Green
Color & Finish	Black sand texture

MECHANICAL SPECIFICATIONS

Parameter	Value
Operating Temperature	-40° to 75°C (-40° to 167°F)
Storage Temperature	-40° to 85°C (-40° to 185°F)
Temperature Cycling	-40° to 75°C (-40° to 167°F): 40 cycles = 0.2dB change
High Temperature	70°C for 96 hours = <0.4dB change
Mating Durability	500 mating cycles (clean every 25 matings) = <0.2dB change
Damp Heat	40°C (104° F) at 93% RH for 96 hours = <0.4dB change

**STANDARDS
COMPLIANCE**

ANSI/TIA-942-A

Telecommunications Infrastructure Standard for Data Centers

ANSI/TIA-568-C.3

Optical Fiber Cabling Components Standard

TIA-604 Series

Fiber Optic Connector Intermateability Standard

TIA-455 Series

Standard Test Procedure for Fiber Optic Components

GR-326-CORE

Generic Requirements for Single Mode Optical Connectors and Jumper Assemblies

IEC 60874-1

Connectors for Optical Fibers and Cables – Generic Standard

IEC 61300

Fiber Optic Interconnecting Devices and Passive Components – Basic Test and Measurement Procedures

IEC 60874-1

Connectors for Optical Fibers and Cables – Generic Standard

UL 94

Tests for Flammability of Plastic Material for Parts in Devices and Appliances

RoHS

Directive on Restriction of Hazardous Substances